

## Important Notice Regarding Warranty

Any faults that occur as a result of failure to comply with these installation instructions will not be covered by the product warranty.

The products must be inspected prior to installation and any faults to ensure correct product; colour and any obvious defects or faults to be reported back to the store of purchase for an immediate replacement prior to the flooring being installed. Dunlop Flooring will not be responsible for installation cost claims where flooring was installed as the wrong product, colour or obvious defects.

In order to enjoy the peace of mind of this product's warranty and ensure the optimum performance of your floor, you must comply with all instructions relating to preparation, subfloor, installation environment, installation method, and ongoing care and maintenance of the floor.

Special attention needs to be given to areas where direct sunlight from floor to ceiling windows can significantly raise the temperature of the floor. It is recommended that blinds, tints or window curtains are used to protect the floor from the heat of the direct Sun.

 **Please review all the information before installing this product, all factors need to be considered when choosing product.**

## APPROPRIATE SETTINGS

Suitable for use in residential settings or light commercial areas, such as hotels, conference rooms, health care, childcare, education, small offices, small department stores, boutiques and lobbies. This product is designed for internal installation only – it is NOT to be installed in areas that have a potential for flooding, such as bathrooms, laundries, areas with a floor waste, saunas or outdoor areas.

This product is not suitable for installation in garages, as discolouration of the surface of the planks can occur as a result of prolonged contact with rubber.

**ALL** Hybrid / Rigid Core products installed in wet areas including bathrooms and laundries do not meet the National Construction Code (NCC) and Australian Standard 3740:2021.

## PRE-INSTALLATION

- Pre-Installation should comply with Australian Standard AS1884:2021

### A) ACCLIMATISATION

- It is best practice to acclimatise planks on site where they will be installed for 24 hours prior to installation. The temperature must be kept between 15-28°C for the acclimatisation and installation processes.
- Always handle, store and transport the planks carefully to prevent distortions. Store and transport cartons on a flat surface in neat stacks.

### B) SUBFLOOR

The requirements below apply to all subfloor options detailed throughout this document and must be paid careful attention to in order to minimise the risk of problems occurring with your flooring post installation. All subfloor preparation must comply with Australian Standard AS1884:2021.

**All substrates must be, structurally sound, plain, smooth, clean and dry:**

- **Structurally Sound:** This product can be installed onto concrete subfloors and existing timber sub floors, provided they are not cushioned and are dimensionally stable (Refer to Timber Sub floor section). Hybrid Planks can be installed over existing PVC, Linoleum and Ceramic Tiles. (For ceramic tiled floor coverings please see subsection B.2) Tile Sub Floor).
- **Plain and Smooth:** Deviations in any subfloor level must not exceed 2mm under a 1 lineal metre straight edge. Raised points must be sanded/ground down and depressions filled using levelling compound. Special attention for grout lines.
- **Clean:** Ensure the subfloor is clean, subfloor should be vacuumed thoroughly to remove any loose materials, prior to installation.
- **Dry:** It is essential that the moisture content of any subfloor complies with Australian Standard 1884:2021 a maximum of 80% relative humidity for concrete subfloors and 10 – 14% moisture content for wood subfloors. A high reading of Relative Humidity (RH) or Moisture Content (MC) will affect the integrity of the subfloor.

**The final responsibility for determining if the subfloor is adequately suitable for installation of the flooring, lies with the installer of the product.**

#### ***B.1) TIMBER SUB FLOOR***

- Hybrid planks can be installed on particleboard or strip timber subfloors; however, the installation of a 200-micron black builders' plastic **must** be installed under the Hybrid Planks to ensure the product's backing does not grip on the fibrous subfloor.
- Existing timber floors should be securely fixed, to minimise the risk of squeaking.

#### ***B.2) TILE SUB FLOOR***

- The floor must be sound and firmly fixed, and any loose or powdery material removed from the joints.
- Any loose tiles should be removed and repaired to a structurally sound condition.

#### ***B.3) HEATED SUBFLOORS***

Always refer to the underfloor heating system's manufacturer recommendations for additional guidance on installing Hybrid flooring and the compatibility with their system.

##### • Electrical underfloor heating system

It is **not recommended** to install hybrid plank flooring over an electrical underfloor heating system.

##### • Hydronic underfloor heating system

**This is acceptable provided the following instructions are complied with:**

- Before installing over the newly installed heating system, operate the system at maximum capacity to force any residual moisture from the subfloor.
- Once this has been completed, switch off the heating system for installation of the flooring.
- Ensure the surface temperature never exceeds 28°C.

#### ***B.4) RUBBER & CORK ACOUSTICS UNDERLAY***

- Hybrid flooring is a floating floor which will float freely on the sub floor.
- A cork or rubber crumb acoustic underlay may cause friction with the foam backing on the planks. Installation of a 200-micron black plastic must be installed under the Hybrid Planks to ensure the product's backing does not grip on the cork or rubber underlay.

#### **C) LAYOUT**

- Check each plank for any manufacturing defects prior to installation. Dunlop Flooring will not be responsible for installation cost claims where flooring was installed as the wrong product, colour or obvious defects.

- Hybrid Planks are manufactured to a consistent length with a limited pattern repeat. To achieve the most natural and realistic finish the planks should be laid randomly across the floor. This will result in a more natural looking floor, minimising pattern repeat.
- The boards should be fitted to run the length of the longest, straightest wall. In narrow hallways, install the floor parallel to the length of the hallways.
- Before laying commences, carefully measure the length and width of the rooms and hallways, plan the layout so the floors look balanced and ensuring borders are not less than half a plank width from the wall.

## INSTALLATION

- Ensure you have read and understood all the subfloor requirements detailed in the previous section.
- A perimeter expansion gap of a minimum of 10 mm is required around perimeter walls, permanent fixtures (benches, cabinetry, pipes, door frames etc.). This gap can be covered with skirting, scotia or other profiles available. **No fillers such as silicone or caulking agents are to be used** in the installation of Hybrid Flooring, as it will not allow the floor to float, expand and contract as it is designed to do.
- An **individual room** raft cannot exceed 20m in length and 10m in width and **must** be compartmentalised by expansion joints.

In doorways between adjoining rooms, the use of expansion joints **must** be utilised to compartmentalise the flooring to allow the area in the adjoining room to expand and contract independently.

- Skirting boards and door frames should be removed or undercut to allow for expansion. Never attach the skirting boards or scotia to the floor. This method does not allow the floor to expand and contract under the skirting boards/scotia. Firm fitting of skirting boards / scotia can also restrict the expansion and contraction of the boards.
- It is recommended a scotia / skirting of 15mm – 20mm is used as the floor may contract during colder periods / seasons allowing for coverage.

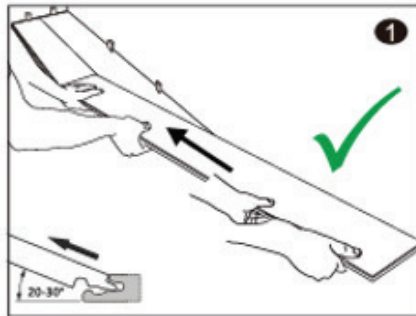
**Note:** Dunlop Flooring offer a range of trims for our Hybrid Plank ranges, that will cover these expansion gaps.

- Adhesives are not to be used for this product as it is a click floating system. Adhesives or any other materials that restrict expansion and contraction of the floor raft will void warranties.
- Do not install kitchen benches, cabinetry, fittings or heavy items on top of the Hybrid planks. This will pin the floor in place and prevent the natural movement of the floating floor.

## HOW TO INSTALL

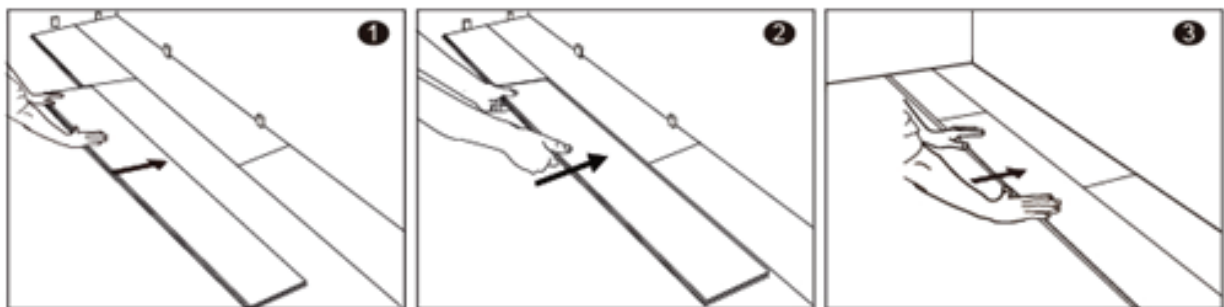
- These planks utilise an innovative Uniclic Angle to Angle locking mechanism. It is recommended to use an angle of between 20 – 30 ° when installing long and short sides. The boards can be installed using angle technique either pulling or pushing the boards to engage.

Angle top end – Tongue to groove – Male to female. Support the plank at an angle of 20 – 30°, engage the short side and lower board to the subfloor as per below photo.



### How to Angle long end

Firstly, connect short side male into the female. Secondly, see below, slide the board toward the next board you want to engage into. Push / Pull the short end forward to get as close as possible to the long side. This should be done as straight as possible to allow the top joint to slide up towards the long end without friction or damage.



Thirdly, once you are as close as possible to the long side, line the plank up. Ensure the male is in the female the whole way along the long joint. Then engage by pushing or pulling into place. The board should now sit flat.

Visually check for no gapping or lipping. Run your hand along the joins to ensure it is smooth and level.

### Disengagement / Separation of panels

**DO NOT** try to remove the board by simply lifting or pulling the plank up. To separate boards at short end if ever needed. It is recommended to Push left board forward, pull right board back. Again, ensure it is coming down along the channel parallel or it will be too tight to dis-engage, or it might fracture / damage the join.

- Planks are most commonly to be laid from left to right. The tongue in groove method is the most common and easiest way. Start with Groove away from the wall and always ensure a 10mm perimeter gap.

- Start with the first plank that will be installed in the corner. For planks of the first row (not in the corner), remove the click profile on the long side that will allow the plank to sit directly next to the wall. Any side of a plank that is directly next to a wall, must have its click profile removed, to ensure the required expansion gap of 10mm is maintained by the spacers.

- To make the start of the installation easier, assemble the first 3 rows away from the wall. Then slide the first 3 rows at the wanted position close to the wall with the required 10 mm distance spacers in place. Take a string line and hold it alongside the installed planks to check and adjust the straightness of your installed first 3 rows. It is recommended to make added checks throughout the install.

**Note:** End joins should never be closer than 300mm to the end joins of parallel rows. This weakens the stability of the floating installation and effects the aesthetics of the finished install.

Like natural flooring products, Hybrid flooring products also expand and contract with changes in temperature.

## FINISHING OFF

- This floor has been designed as a floating floor, **DO NOT RESTRICT MOVEMENT** of the floor.
- The perimeter of the floor can be finished by refitting any pre-existing trims that were removed for installation.
- Remember the use silicone or caulking agents will stop the floor from floating, expanding and contracting and will therefore void the warranty.
- At doorways, a door threshold strip to be used to protect the edges of the floor and supply a decorative transition from one floor type to another.
- The surface of the planks is scratch resistant, however, it is not scratch proof, to assist in protecting the floor ensure felt protectors are on the legs of furniture to avoid scratches and the use of plastic mats under wheeled chairs I.e., office Furniture.

Felt back castor cups should be used under heavy furniture. Avoid dragging furniture or other heavy objects across the floor.



For more information contact HeartrIDGE on 1800  
622 293 or visit [heartrIDGE.com.au](http://heartrIDGE.com.au)